

Mahony Hall

Orchestral concert hall with rear choir stalls



Capacity

1284 in open orchestral platform configuration
1070 in Black Box Configuration.

Stage

Orchestral Wooden platform with curved downstage edge and overhead wooden acoustic canopy.

Width upstage: 12m

Width Downstage: 20m

Depth: 12m

Height: 1m

Clearance to canopy: 10m

Clearance to rigging beams above canopy: 15m

(2m x 1m risers available on request)

Rigging

Rigging only from five beams running upstage, downstage 2m apart from centre. Maximum weight per beam 2000kg.



Mix Position

Rear of bleachers under balcony in seat rows V, W and X (32 seats used from room seating capacity)

Mix size is 5m wide x 2m deep.

Lighting System:

Desk:

ETC Ion 1024 Channel Control Desk, ETC Console Colour Monitor, ETC Fader Wing



Front truss:

15m:

4 x Robe Spider LED Moving Lights (Mode 3, 33 Channel)

Mid truss:

11.5m:

4 x Robe Spider LED Moving Lights (Mode 3, 33 Channel)

Drapes truss:

Upstage 11m, Stage left 9m, Stage right 9m.

3 x Robe Spider LED Moving Lights (Mode 3, 33 Channel)

Rear Centre Balcony Rails & 2 x Juliette's

8 x Source 4 Zoom 15-32 (8 dimmers available).

Floor layout:

16 dimmers available on the floor. Some overlap.

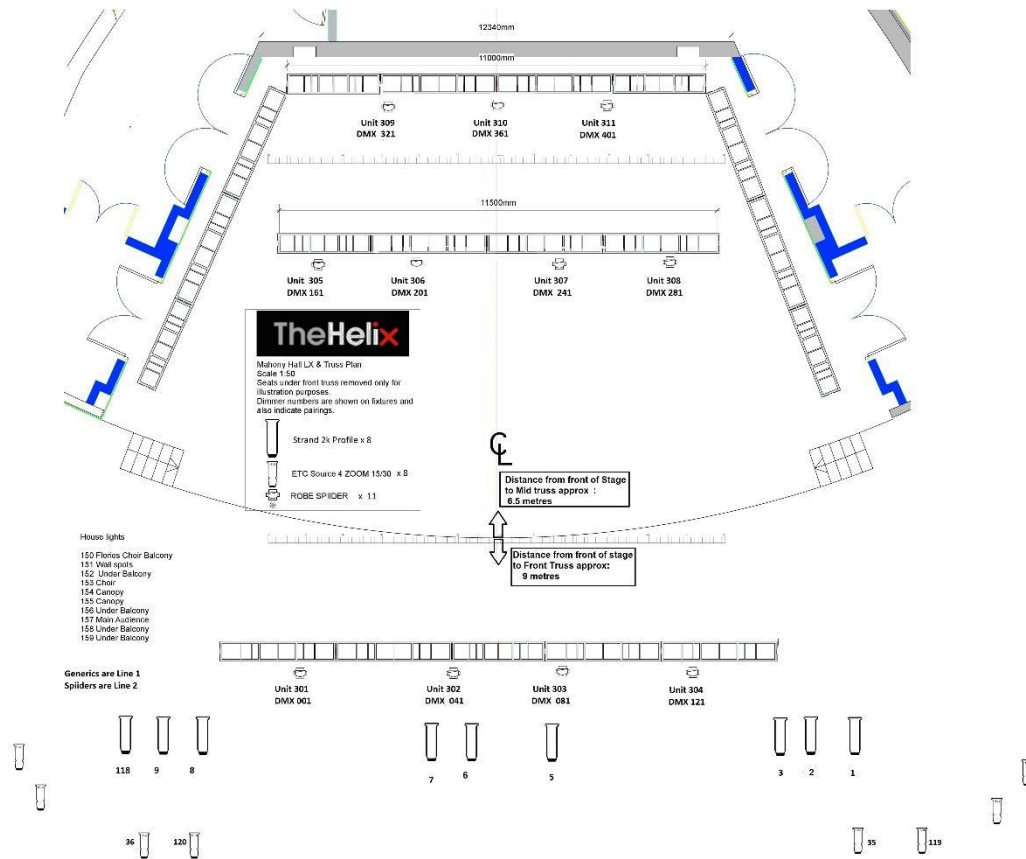
Follow Spots:

2x 2.5k Lycian 1290 XLT (house operators only)

Visiting Lighting /Rigging Power:

200A / 3 Phase /220/315V.

Connectors 125amp-3phase & 32amp-3phase



(Plot updated Dec 2022)

Sound System

14 x Meyer Sound M2D Line Array loudspeakers (7 per side flown)

- 4 x Meyer Sound M2D SUB (2 per side flown)
- 4 x Meyer sound UPA-1P fills (2 per side ground stacked on HP700s)
- 4 x Meyer Sound UPM-1P front fills (2 per side on stage lip)
- 4 x Meyer Sound UPM-1P (2 per side balcony fills)
- 2 X Meyer Sound HP 700 SUB (1 sub per side upright)
- 3 x Sp X ACT full range loudspeakers (choir stalls fills)



FOH equipment

- Midas PRO 2 TP Digital mixing console
- Midas DL 251 Digital stage box (48 Input, 16 outputs)
- 1 x XTA DP224 Speaker Management System
- 1 x XTA DP226 Speaker Management System



Monitor Equipment

6 x Meyer UM-1P stage monitors
(Additional monitors available on request)
Midas Legend 3000, 44/4 mixing console
1 x KT Graphics Rack
1 x KT compressor/Gate Rack
1 x FX Rack
48 ways of KT active microphone Splitters

Microphones

9 X SM 58
9 X SM 57
8 X AKG 451
5 X Sennheiser K6 with ME66
3 X Sennheiser 604e
2 X Octavia MK 012 - 01
5 x AKG CHM 99 B hanging microphones (Available on request)
1 X AKG 414
2 AKG C3000
1 X D112
2 X BETA 52
4 x Shure goose neck podium mics
10 X KT Active DI
25 X K&M Microphone stands
Sennheiser Hand Held mics , DPA Headset mics available for hire on request.

Intercom

Canford system with 7 x belt packs & headsets.
Show Relay to Dressing rooms, Green Room and Hallway.

Power

Visiting Lighting Power 200A / 3 Phase / 220/315V. Connectors 125amp-3phase, 32amp-3phase

Visiting Sound Power 3 x 63A / Single Phase / 240V

OB1 outside broadcast power 32A or 63A or 125A / 3 Phase / 220/ 315 V

Switchable generator incoming power facility

Bus Power 16A / 32A / 63A 220V single phase available

Rigging power 32A / 220/315V 3 Phase on catwalk, stage end.

Load In

Two truck dock at stage height, through double doors. 5m push to stage

